

Essex Devolution for Independently Minded Councillors



Residents for Uttlesford

LGA Essex Independent Group Event
12 February 2015

About Residents for Uttlesford:

- Says what it does on the tin
- We believe that locals should decide what's best for themselves
- Formed 2014
- Representation at all 3 local government levels



R4U supports devolution which:

- Increases residents' right to make local decisions
- Pushes more political power to towns and villages
- Doesn't increase total cost of local government
- Has a democratic mandate

The current Greater Essex Devolution proposals don't meet any of these objectives

Is Local Government Working?

- **NO! Essex isn't working for residents:**

- Residents are being ignored & are overpaying for the fact that important things aren't getting done

- **Residents have a small voice:**

- Self-appointed cabinets decide what happens and everyone tells our communities what's good for them

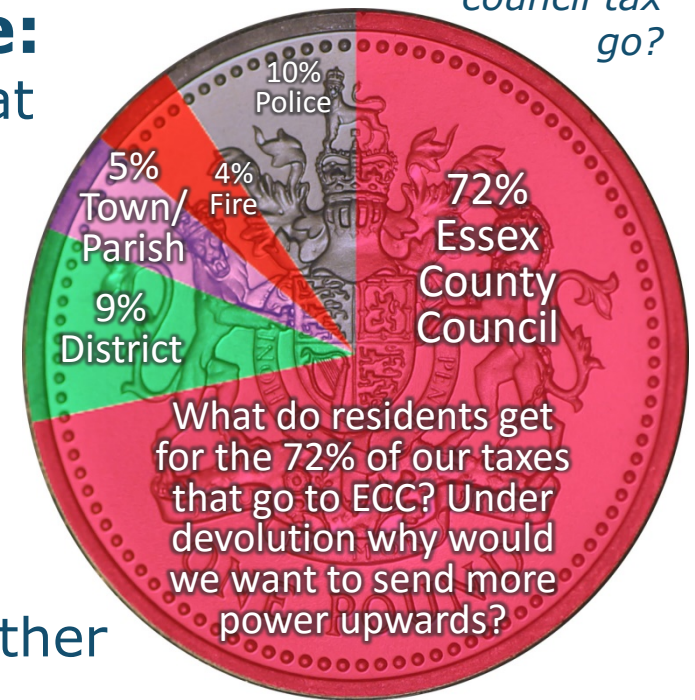
- **Too much bureaucracy:**

- Every layer takes their slice of the taxpayers' cake

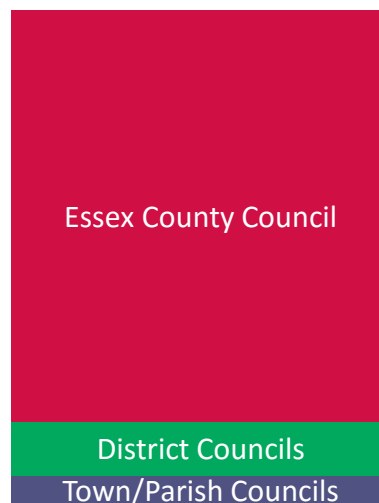
- **Blame game:**

- Too many layers and fuzzy accountability mean no-one owns problems – they just blame each other

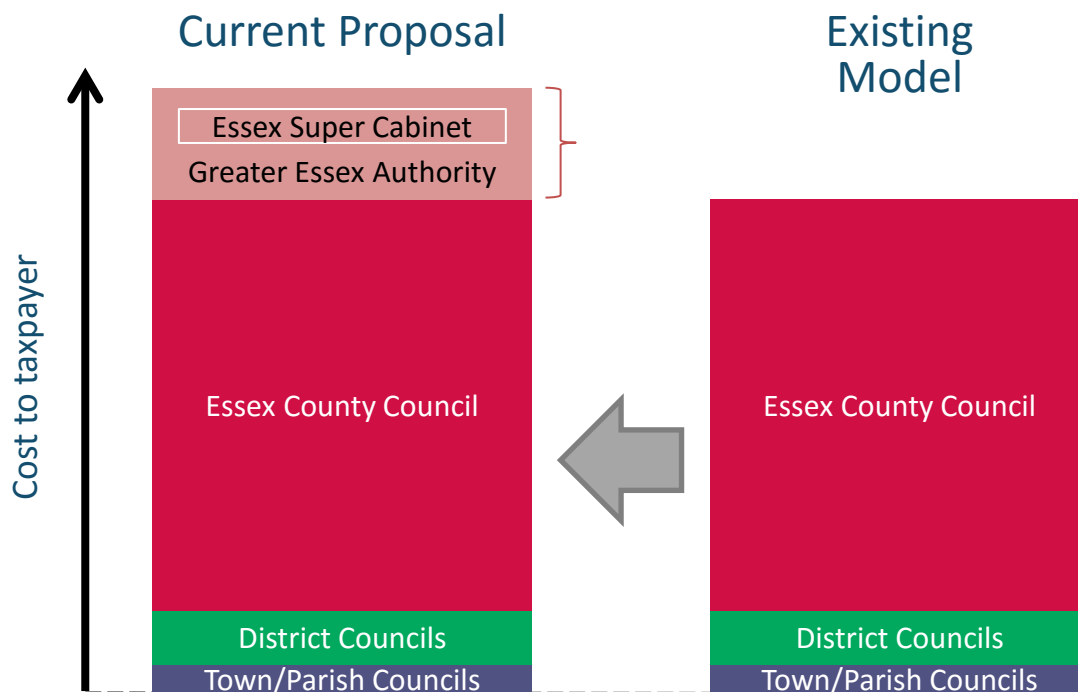
Where does your council tax go?



Existing Model



Current Proposals = More Government and Taxes



How can layering more on a broken system fix it?

✘ **Blame Game:**

- New 4th layer of local government, more confusion, bureaucracy & finger pointing

✘ **More Taxes:**

- Funded by increased local taxes until (**if**) significant economic growth occurs

✘ **Anti-Democratic:**

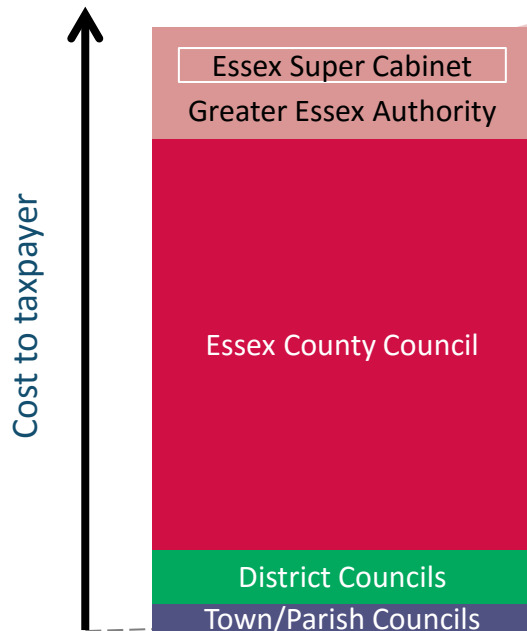
- New Essex Cabinet appointed by other appointed Cabinets
- No mandate as no referendum proposed

✘ **Smaller Voice:**

- A smaller voice for residents

At Least 17 More Taxpayer Funded Quangos

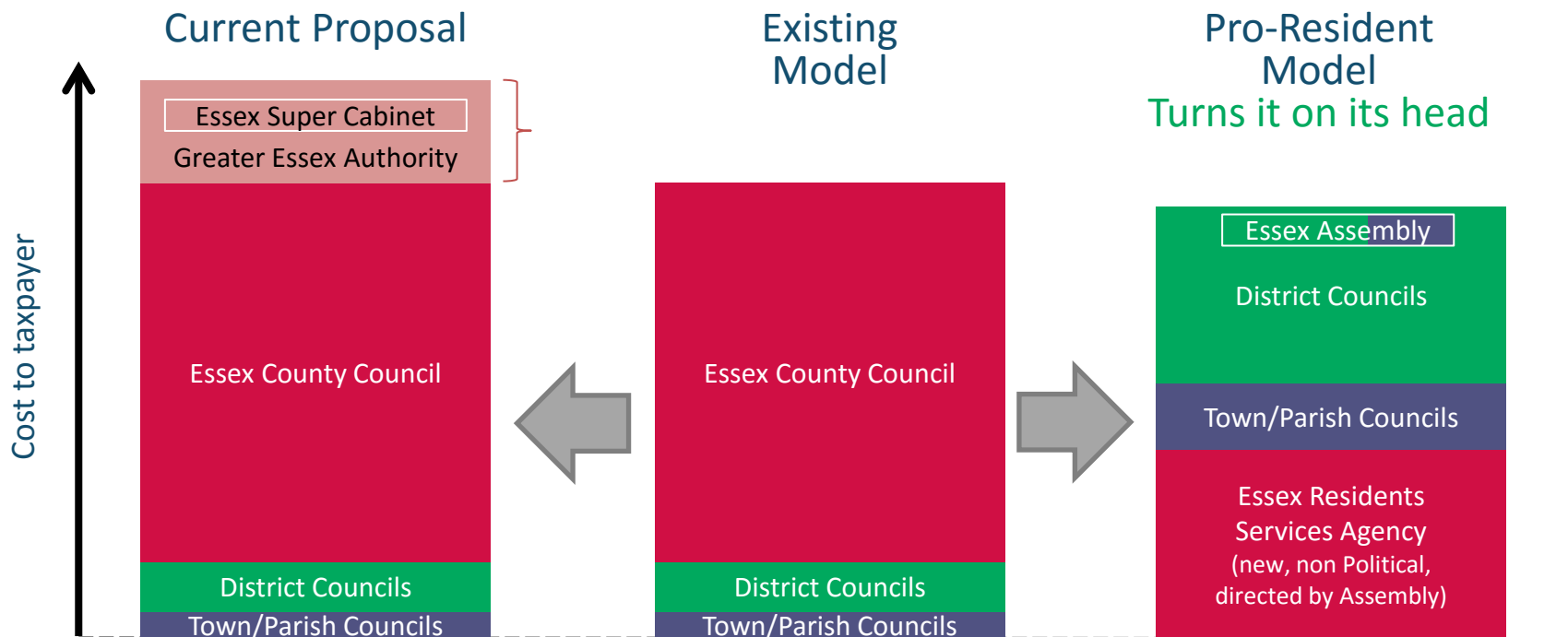
Current Proposal



£

- Greater Essex Combined Authority
- Greater Essex Overview and Scrutiny Committee
- Growth Area Board 1
- Growth Area Board 2
- Growth Area Board 3
- Growth Area Board 4
- A special purpose vehicle
- An investment fund
- An Infrastructure Investment Fund
- The Greater Essex Growth and Infrastructure Framework
- The Greater Essex Integrated Transport Authority
- A Centre for Apprenticeship Promotion and Brokerage
- A University Enterprise Zone
- The Greater Essex Employment And Skills Commissioning Board
- The Greater Essex Spatial Framework
- A Land Commission
- Power to create other local development corporations.....

There is a choice over how we devolve



- Expensive
- Bureaucratic
- Anti-democratic

- Poor on infrastructure
- Poor value for money
- Unresponsive to residents

- Cheaper
- Accountable
- Democratic

Pro-Resident Model Explained

Cheaper ▪ Accountable ▪ Democratic

Essex
Assembly

District Councils

Town/Parish
Councils

Essex Residents
Services Agency
(new, non Political,
directed by
Assembly)

Radical Actions

1. Remove County Councillors
2. Create Essex Assembly
 - All District Councillors plus Parish Council Chairs
3. New 'Essex Residents' Services Agency
 - Formed from rest of ECC and parts of District Councils
 - Infrastructure planning and delivery
 - Economy, housing, planning, schools, highways, family services/social care
 - Accountable to Essex Assembly
4. Put proposals to referendum

Clear Benefits

- ✓ Clearer accountability
- ✓ Removal of duplication
- ✓ Increased democracy & voice for residents
- ✓ Taxpayer value
- ✓ Long range plans supported by districts and parishes

Being the voice of residents



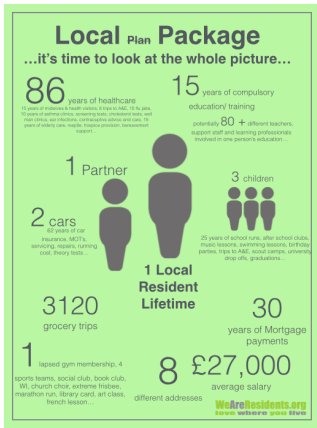
- I don't want finger pointing; **I want a single person to be accountable for fixing stuff**
- I don't want people who live 30 miles away deciding what happens here; **I want to decide locally**
- I'm sick of more government; **I want less government**
- Taxes keep going up; **I want more value for my taxes**
- Our roads, schools and doctors are jammed; **I want some proper long range plans sorting out**
- **Essex just needs to work for residents**

Exploring the key areas to be devolved

- What are YOUR local priorities? How do you know?
- What areas often get overlooked?
- What services/areas need investment for the future?
- Action: discuss and share the 3 key priorities for your area. Why does local control matter?

Taking back control of the devolution process

Case Study: R4U- From action group to residents' power



Inform

Network



Lobby



Campaign



Election